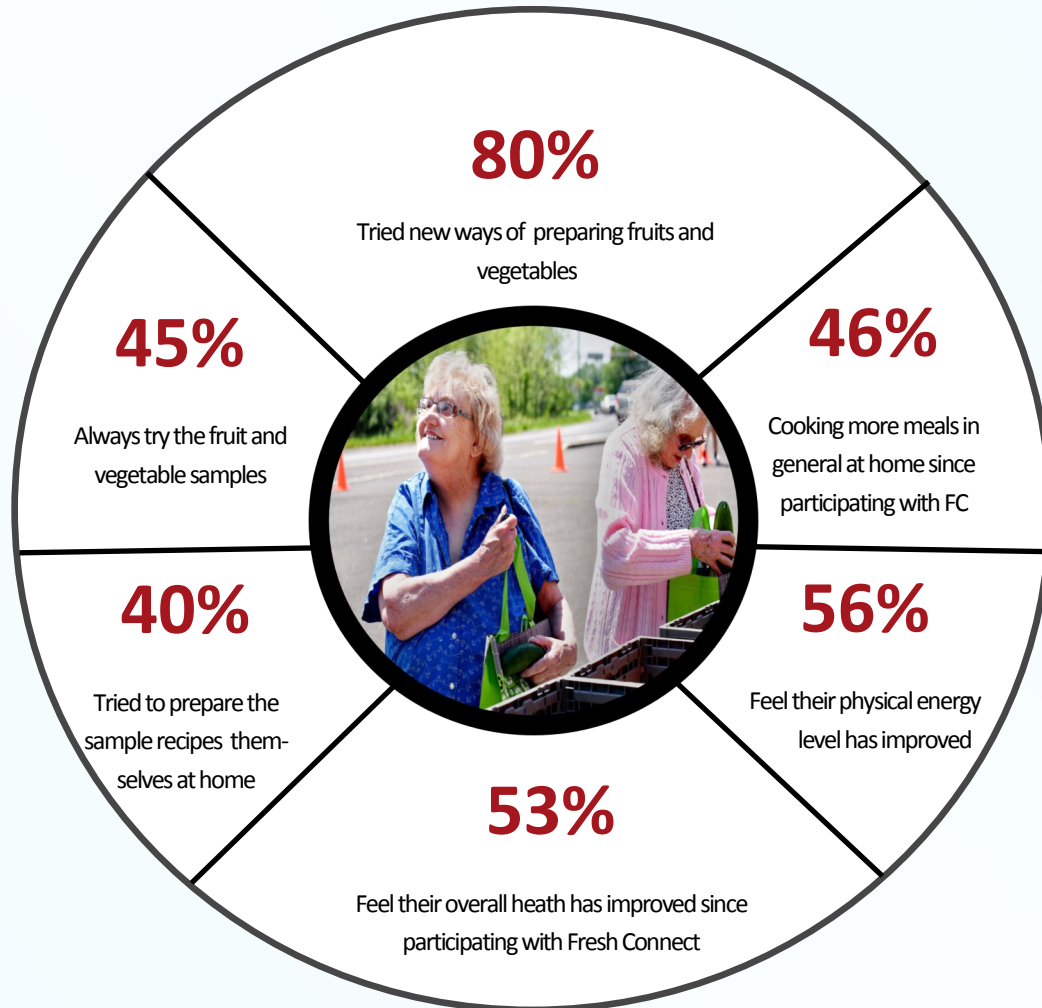



In an effort to assess initial outcomes of the Fresh Connect mobile farmers market, a survey was conducted in September 2017 of individuals participating in the program. 110 surveys were collected on three successive Fridays at the Fresh Connect distribution site in Bristol. The survey was comprised of 13 questions, asking about participants' intake of fruits and vegetables, whether they tasted the prepared samples of produce, and their preparation of produce and meals in the home.

On average, an increase of **1.24** additional servings of fruit consumed per day since participating with Fresh Connect.



On average, an increase of **1.12** additional servings of vegetables consumed per day since participating with Fresh Connect.

**Fresh Connect Bucks County** is a free farmer's market bringing fresh, healthy food to our hungry neighbors in Bucks County. It returns to the same location on the same day at the same time each week, providing reliable and needed food to the 57,000 Bucks County residents facing hunger, 32% of whom are children. Fresh Connect is a collaboration of Bucks County Opportunity Council, Philabundance, Rolling Harvest Food Rescue and St. Mary Medical Center, with generous funding by United Way of Bucks County. For more information, visit: [BCOC.org](http://BCOC.org).

Of the participants surveyed, 9 reported that this was their first visit to Fresh Connect, 6 said they had attended once before, 21 said they had attended 2-4 times and 74 said they had attended more than four times. *Photo courtesy of Bucks County Courier Times.*